

# <sup>2</sup>**C<sup>2</sup>D** DIGITAL MICROSCOPE™

10x • 60x • 120x • 220x



- \* C<sup>2</sup>D Digital Microscope
- \* C<sup>2</sup>D Camera Stand
- \* USB Cable (5ft. or 1.5m )
- \* Software (CD-ROM)
- \* Six Prepared Slides with Case
- \* Dissecting Tools
- \* Instruction Manual

## **WARNING!**

*Only for use by children over 10 years old. Only for use under the supervision of an adult. This toy contains functional sharp needle, sharp edge on scalpel, scissors, spatula, tweezers, and prepared slide.*

## **CAUTION!**

*Read the instructions before use, follow them and keep them for reference.*

***Congratulations for purchasing the C<sup>2</sup>D Digital Microscope, one of the newest learning tools!***



*This C<sup>2</sup>D digital Microscope will encourage creative play activities that are directed by your children by harnessing the power of your PC. With the C<sup>2</sup>D Digital Microscope, you will be able to explore your surroundings in a way as never before and share these findings with friends and family. There are many benefits from using the C<sup>2</sup>D Digital Microscope and some are:*

- *Use software to manipulate images in numerous and insightful ways*
- *Create shows with video recording features*
- *View the images with your friends on the computer*

***About this manual***

*This manual is being designed so that the information is easy and ready to find in order to make setting up your microscope simple and less frustrating.*

*This instruction manual helps to you:*

- *Set up your C<sup>2</sup>D Digital Microscope*
- *Maintain it*
- *Change bulb when required*
- *Troubleshoot any problems that arise*



<i>Basic Components</i>	<i>1</i>	<i>Using the C<sup>2</sup>D Digital Microscope</i>	<i>8</i>
<i>Detailed Components</i>	<i>2</i>	<i>Using Handheld Microscope Mode</i>	<i>9</i>
<i>System Requirements</i>	<i>3</i>	<i>Using the C<sup>2</sup>D Camera</i>	<i>9</i>
<i>System Support</i>	<i>3</i>	<i>Using the C<sup>2</sup>D Software</i>	<i>10-12</i>
<i>Software Installation</i>	<i>4 - 7</i>	<i>Care &amp; Maintenance</i>	<i>13</i>
		<i>Troubleshooting</i>	<i>14</i>

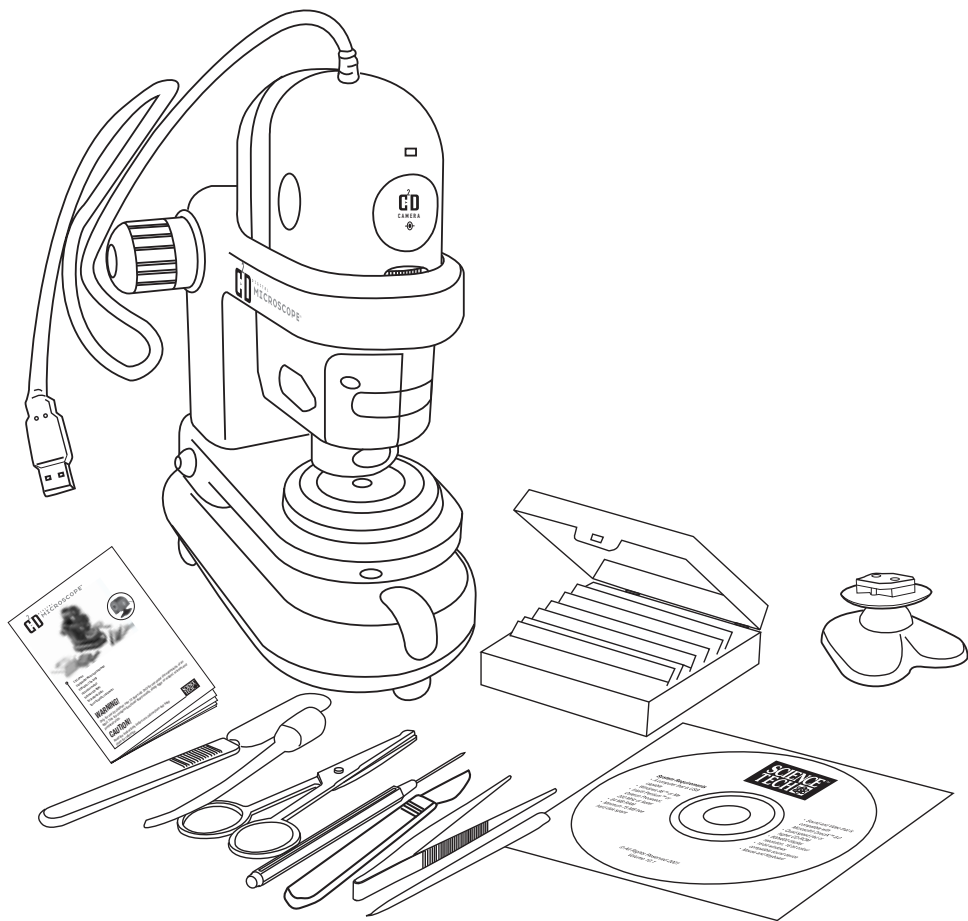
***\* TRADEMARKS:***

*Microsoft Office 97, Office 2000, Windows 2000, Windows XP, NetMeeting, Windows 98™ ( 2<sup>nd</sup> Edition), Windows Me and DirectX are registered trademarks of Microsoft Corporation.*

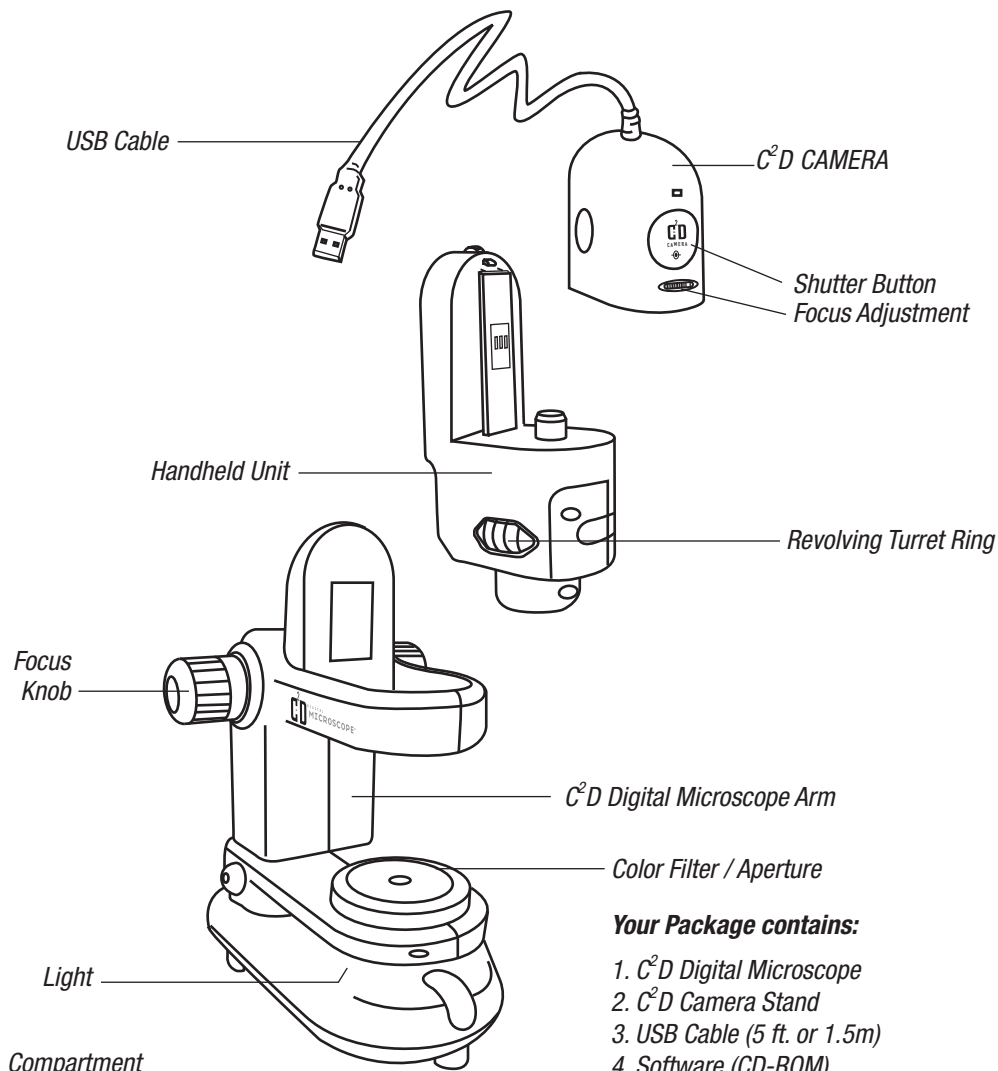
*Intel and Pentium are trademarks of Intel Corporation.*

*Adobe and PhotoShop are registered trademarks of Adobe Corporation.*

# BASIC COMPONENTS



# DETAILED COMPONENTS



## **Your Package contains:**

1. C<sup>2</sup>D Digital Microscope
2. C<sup>2</sup>D Camera Stand
3. USB Cable (5 ft. or 1.5m)
4. Software (CD-ROM)
5. Prepared Slides (6) with Case
6. Stainless Steel Spatula
7. Stainless Steel Scissors
8. Stainless Steel Tweezers
9. Stainless Steel Needle
10. Stainless Steel Scalpel
11. Stirring Rod
12. Dropper
13. Instruction Manual



# SYSTEM REQUIREMENTS

- *A computer that is USB capable*
- *Windows 98™ (2nd Edition), Me Windows® 2000 Professional and Windows XP*
- *Intel® Pentium™ 200 MHz or faster*
- *64 MB RAM*
- *Minimum 75 MB free hard disk space*
- *Sound and Video that are compatible with Microsoft® DirectX® 8.0 or up*
- *Quad speed (4x) or higher CD-ROM*
- *800x600 display resolution, 16 bit colour*
- *16-bit windows compatible sound device*
- *Mouse and Keyboard*



# SYSTEM SUPPORT

*This C2D Digital Microscope supports\* Microsoft® Video for Windows® (VFW). You can use third party software that supports VFW to access this product. This C2D Digital Microscope also supports\* Microsoft NetMeeting. You can preview your pictures via the Internet with your friends!*

*Please check Microsoft® web site <http://www.microsoft.com> for details.*

*\* Feature only available on computer running Windows 98™ (2nd Edition) or Me.*

# SOFTWARE INSTALLATION

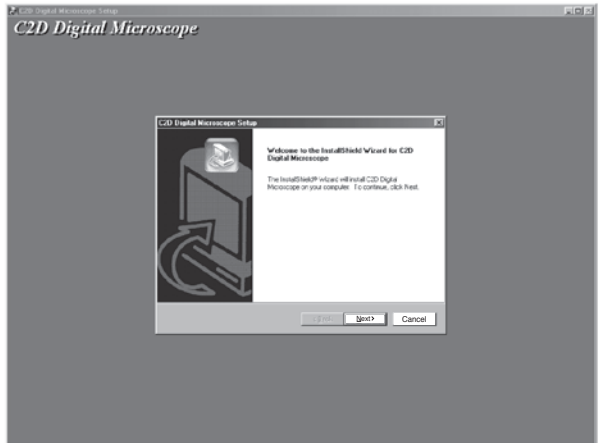
*The installation of the software consists two steps:*

*STEP ONE - Device driver installation*

*STEP TWO - C<sup>2</sup>D software installation*

- 1. Insert the CD-ROM into the CD-ROM drive, the setup program will be activated automatically.*

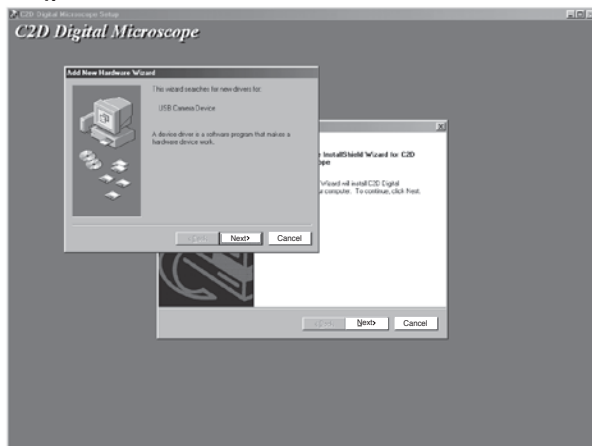
**NOTE:** Clicking the  button will skip to STEP TWO - Install the C<sup>2</sup>D Software.



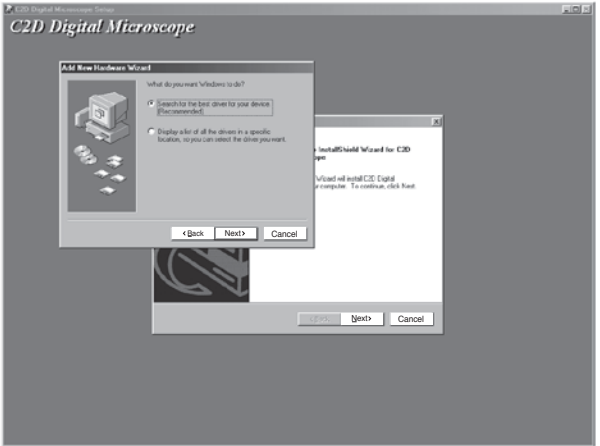
## **STEP ONE - Install Device Driver**

**NOW CONNECT THE C<sup>2</sup>D DIGITAL MICROSCOPE™ TO THE COMPUTER**

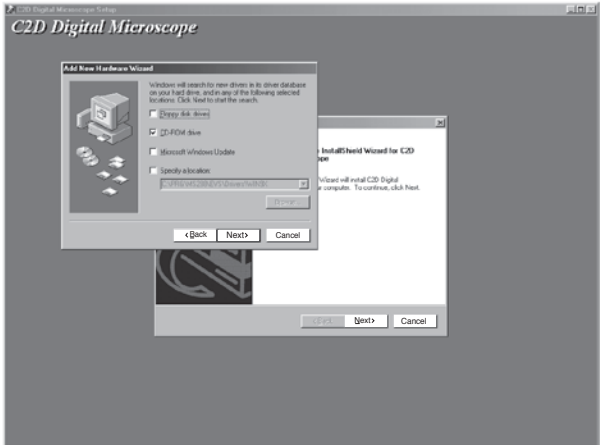
- 2. After connecting the C<sup>2</sup>D Digital Microscope to the computer, you will see a "new hardware found" message.*



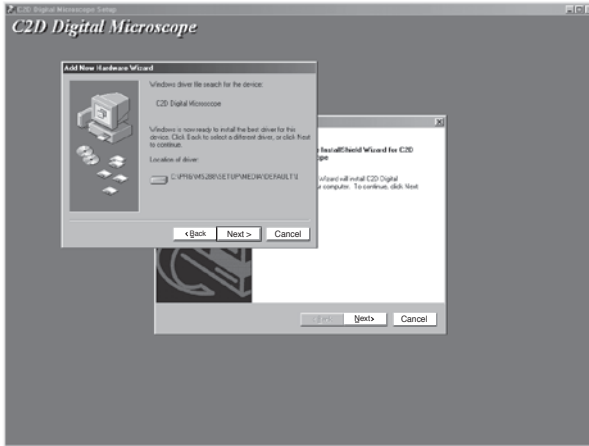
3. Click the Next > button



4. Click the Next > button again and you will see the following screen.



5. Select "CD-ROM Drive" and click **Next >** button to install the driver accordingly.

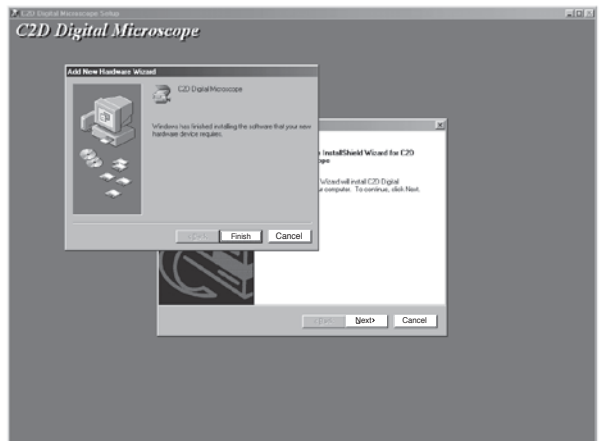


**For Windows 2000 or XP:**

A pop - up window will appear when the C<sup>2</sup>D device driver is being installed, please click **Continue Anyway**

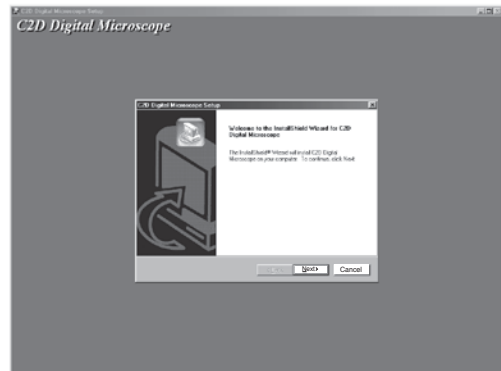


6. Once the new hardware device has been installed properly, please proceed to step two to install the C<sup>2</sup>D software. Once the hardware has been installed properly, click the **Finish** button to finish the device driver installation.

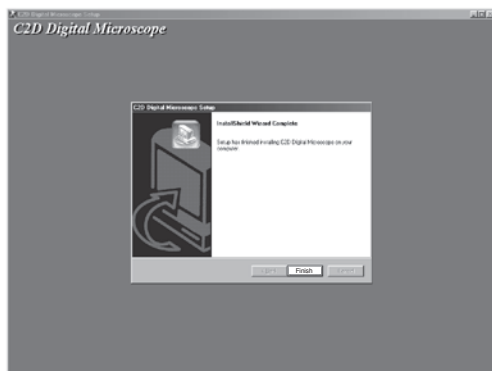




## STEP TWO - Install the C<sup>2</sup>D Software



1. Click the **Next >** button to finish the application software installation.



2. Once the software has finished installation, click the **Finish** button. You can now run the C<sup>2</sup>D software.

**NOTE:** The setup program will take a while to install Microsoft® DirectX® 8.0 components. It does not mean that your computer has crashed. You might have to restart your computer.

# USING THE C<sup>2</sup>D DIGITAL MICROSCOPE

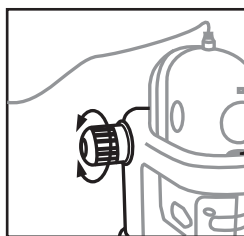
## Setup Suggestion

Please remember that the C<sup>2</sup>D Digital Microscope can be used in the handheld mode, so make sure that the work area is free from obstruction and the monitor is viewable.

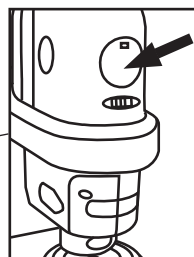
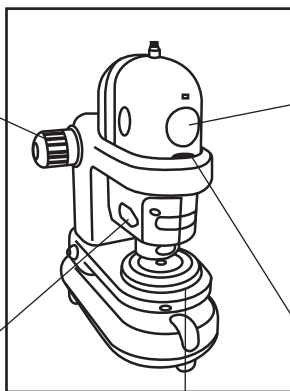
## Controls

### Learning the C<sup>2</sup>D controls

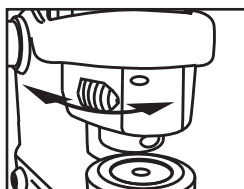
Once you have the C<sup>2</sup>D software installed and running, you can use the controls to focus, change magnification and capture pictures/movies.



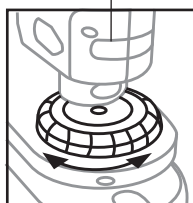
Focus Knob



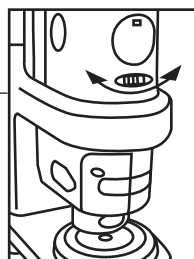
Shutter Button



Revolving Turret Ring



Color Filter / Aperture



Focus Adjustment

**Focusing** – 1. Focus the image on the screen with the focusing knob.

2. You should be able to see the image become closer or further away as the focus knob is adjusted very slowly.

**NOTE :** This image on the screen will have a delay. Turn the focus knob slowly and wait for the image to refresh before adjusting again.

**Changing Magnification** – Change the magnification of the image by turning the Revolving Turret Ring.

**Changing Color Filter** – Different specimen effect can be displayed by rotating the Color Filter/Aperture.

**Taking Images** – Images on the screen can be captured (recorded) by pressing the Shutter Button.

**Lighting** – The light can be turned on or off through the software.

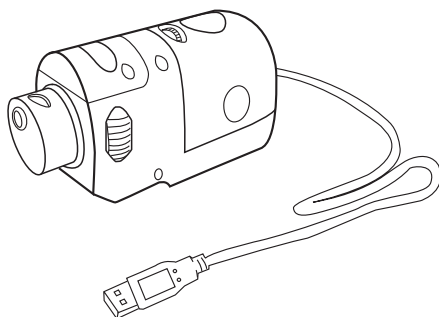
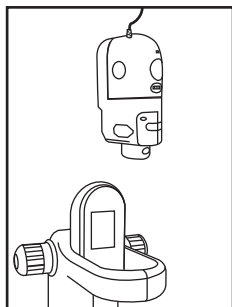
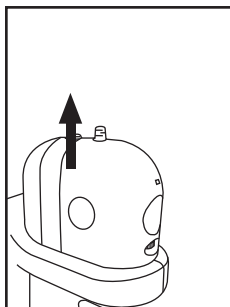
# USING HANDHELD MICROSCOPE MODE

**Focusing** – The handheld unit itself can be used to focus by moving the unit closer or further from the object

**NOTE :** This image on the screen will have a delay. Turn the focus knob slowly and wait for the image to refresh before adjusting again.

**Changing Magnification** – Change the magnification of the image by turning the Revolving Turret Ring.

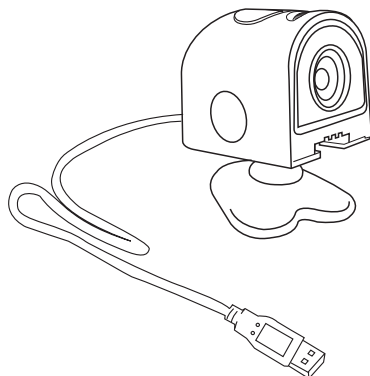
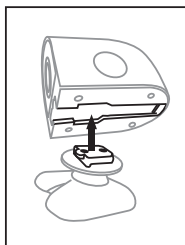
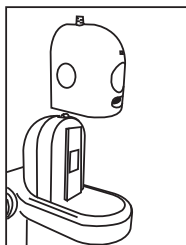
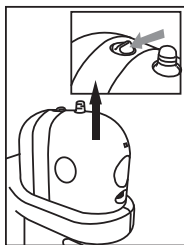
**Taking Images** – Images on the screen can be captured by pressing the Shutter Button.



# USING THE C<sup>2</sup>D CAMERA

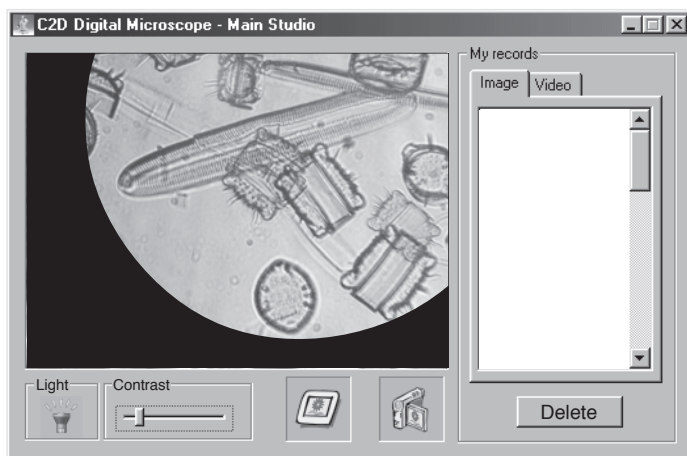
**Focusing** – Focus the image by turning the Focus Adjustment.

**Taking Images** – Images on the screen can be captured (recorded) by pressing the Shutter Button.



# USING THE C<sup>2</sup>D SOFTWARE

## C<sup>2</sup>D Main Studio



### **Light**

Press  button to turn the light on/off.

### **Contrast**

Move the tap  left and right to adjust the contrast.

### **Take Image**

Press  button to capture the current image to "My records".

### **Make Video**

Press  button to start making video to "My records".

NOTE: Press this button again to finish recording.

### **My records**

#### **Images**

A list of images have been saved in your hard disk. You can select the record and view them from the Image Viewer.

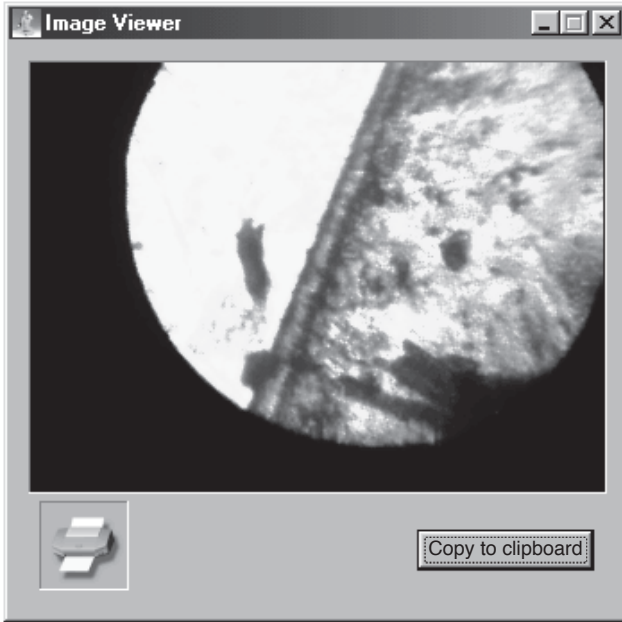
#### **Videos**

A list of videos have been saved in your hard disk. You can select the record and playback them from the Video Viewer.

### **Delete**

Click  button to delete current selected record from the list.

## Image Viewer



### Print

Click  button to print out the image from the printer.

**NOTE:** It would not have any effect unless you have installed the appropriate printer driver.

### Copy to clipboard

Click  button to copy the image to the clipboard.

**TIPS:** You can utilize this feature to process the image further from the other software such as Adobe<sup>®</sup> PhotoShop<sup>®</sup>. You can also use Microsoft<sup>®</sup> Office to make your own presentation.

# Video Viewer



## Seek Bar

Position the mouse pointer on the Seek Bar . You can locate frames directly without playing the whole video sequentially.

## Play

Click  button to start playing the video.

## Stop

Click  button to stop immediately.

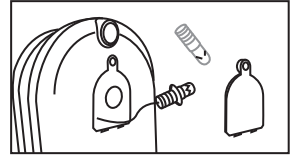
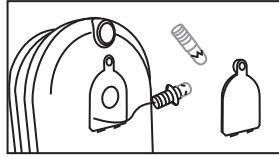
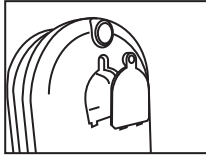
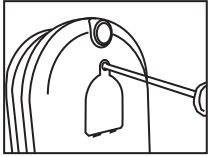
## Pause

Click  button to suspend playing the video.

# CARE & MAINTENANCE

## ***Bulb Replacement***

*Use a Philips screw driver to open the light compartment.*



***Bulb Specification: 2.2V DC 150mA***



# TROUBLESHOOTING

<b>MESSAGE</b>	<b>SOLUTION</b>
<i>The C<sup>2</sup>D Digital Microscope is not connected to the computer.</i>	<i>Connect the C<sup>2</sup>D Digital Microscope to the computer. If the problem still exists, you have to remove the C<sup>2</sup>D Digital Microscope device driver and install it again. (Please consult Windows® User Guide).</i>
<i>Video recording feature is not available.</i>	<i>Reinstall the C<sup>2</sup>D software.</i>
<i>Out of memory.</i>	<i>Please exit other software to free up more memory.</i>
<i>Cannot turn on the light.</i>	<i>Please refer to the section "Care &amp; Maintenance" to replace the bulb.</i>
<i>Error found when loading image into the memory.</i>	<i>Run ScanDisk to check your hard disk for logical and physical errors. ScanDisk can then repair the damaged areas of your hard disk.</i>
<i>Your computer does not have a default printer.</i>	<i>Please check your computer whether an appropriate printer is installed onto your computer.</i>
<i>Cannot initialize clipboard.</i>	<i>Please exit other software to free up more memory.</i>

**Support e-mail address:** [support@edu-science.com.hk](mailto:support@edu-science.com.hk)