

SAMPLE MANUAL ONLY

Manuals are not
available for download.

To purchase
replacement manuals
please visit:

www.cs-sales.net

MX-905 75 in 1

PROJECTS

I. BASIC SEMICONDUCTOR AND COMPONENT CIRCUITS

1.	Resistors in Series and Parallel	9
2.	Switching Circuit	11
3.	Comparator	12
4.	Window Comparator	13
5.	Winking LEDs	14
6.	Light Dimmer	15
7.	Strobe Light	16
8.	Constant-Current Circuit	17
9.	Schmitt Trigger Circuit	18
10.	Capacitor in Series and Parallel	19
11.	RC Oscillator	20
12.	Constant Voltage Circuit	21
13.	Touch Switch	22
14.	Low-Pass Filter	23
15.	Summing Amplifier	24
16.	One Shot LED	25

III. ENTERTAINMENT CIRCUITS

A Big Change	26
17. Electronic Siren	28
18. Electronic Cat	28
19. Electronic Metronome	29
20. The Chirping Bird	29
21. Machine Gun Pulse Oscillator	30
22. Pencil Lead Organ	30
23. Sound Light	31
24. Two-Tone Patrol Car Siren	31
25. Daylight Early Bird	32
26. Intermittent Alarm Generator	32
27. Electronic Woodpecker	33
28. Rain Drop	33
29. Photo Variable Oscillator	34
30. Sound Machine	34
31. Voltage Controlled Oscillator	35
32. Power Amplifier	35

II. THE WORLD DIGITAL CIRCUITS

33.	Transistor AND Gate Circuit	37
34.	Transistor OR Gate Circuit	37
35.	Transistor NAND Gate Circuit	38
36.	Transistor NOR Gate Circuit	38
37.	Transistor Flip-Flop Circuit	39
38.	Timer LED	39
39.	Bistable Multivibrator	40
40.	Reset/Set Flip-Flop	40
41.	OP Amplifier AND Circuit	41
42.	OP Amplifier OR Circuit	41
43.	OP Amplifier Three Input NAND Gate	42

IV. ELECTRONIC APPLICATION CIRCUITS

44.	Pulse Width Modulation	44
45.	Motion Detector	44
46.	Burglar Alarm	45
47.	Shot in the Dark	45
48.	Water Level Alarm	46
49.	Photo Alarm	46
50.	Timer Buzzer	47
51.	Sound Alarm	47
52.	Photo Level Alarm	48
53.	Four Step Water Level Indicator	48
54.	Four Level Photometer	49
55.	Electronic Candle	49
56.	Motion LED	50
57.	Light Dimmer by Pulse Control	50
58.	Sound Sensor Timer	51
59.	Logic Tester	51
60.	Conductivity Tester	52
61.	Voltage Detector	53
62.	Electronic Coin Toss	53
63.	Intermittent Light	54
64.	Two-Stage Timer LED	55
65.	DC-DC Converter	56
66.	Two-Stage Timer Sound	57
67.	Sound Level Meter	58
68.	DC-DC Converter (Negative)	59
69.	Optical Volume	59
70.	Quick Draw	60
71.	Sawtooth Wave Oscillator	61
72.	Marching LEDs	62
73.	Electronic Organ	63
74.	First Aid Siren	63
75.	Falling Bomb Sound	64

5. Winking LEDs

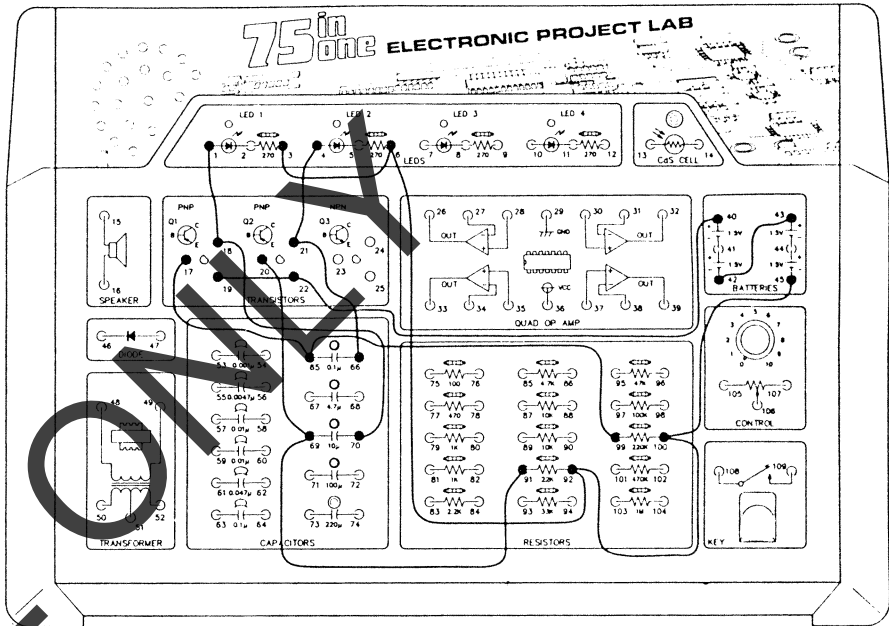
The circuit that you build in this project is called an oscillator. An oscillator is a circuit that turns itself on and off (or goes from high to low output). There are several types of oscillators; slow oscillators are often used to control blinking lights (like the turn signal in a car or truck), and faster oscillators are used to produce sound. Super-fast oscillators produce radio frequency signals called RF signals.

The oscillator that you build in this project is called a multivibrator. A multivibrator uses components that direct current back to each other. This multivibrator circuit controls oscillations to make the LEDs flash at certain intervals.

Connect the wires according to the wiring sequence. Note what happens when you make the last connection; LED1 and LED2 flash alternately.

You'll notice that the LEDs flash at the same speed. The rate that they flash is controlled by two time-constant circuits. Each time-constant circuit is controlled by a resistor, a capacitor, and a transistor. The capacitor charges and discharges through its resistor – the voltage across the capacitor controls its transistor. Then, the transistor acts like an electronic switch, turning the LED on and off.

The flashing speed depends on the product value of the capacitor and resistor in the time constant circuit. In this project, the products of the two circuits are the same ($22\text{ k ohm} \times 10\text{ }\mu\text{F} = 220\text{ k ohm} \times 1\text{ }\mu\text{F}$), so the LEDs flash on and off at about the same speed. You can change the flashing speed by changing the values of the capacitor and/or resistor in the time constant circuit.

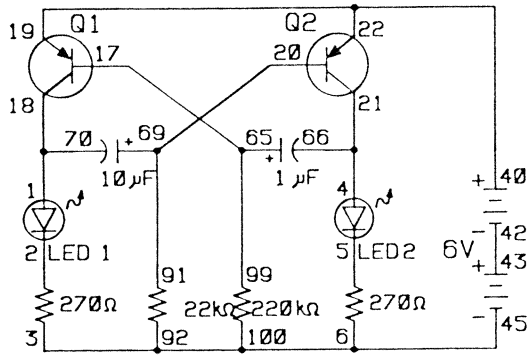


Wiring Sequence:

1-18-70, 3-6-92-100-45, 4-21-66, 17-65-99, 19-22-40, 20-69-91, 42-43

NOTES

SAMPLE ONLY



11. RC Oscillator

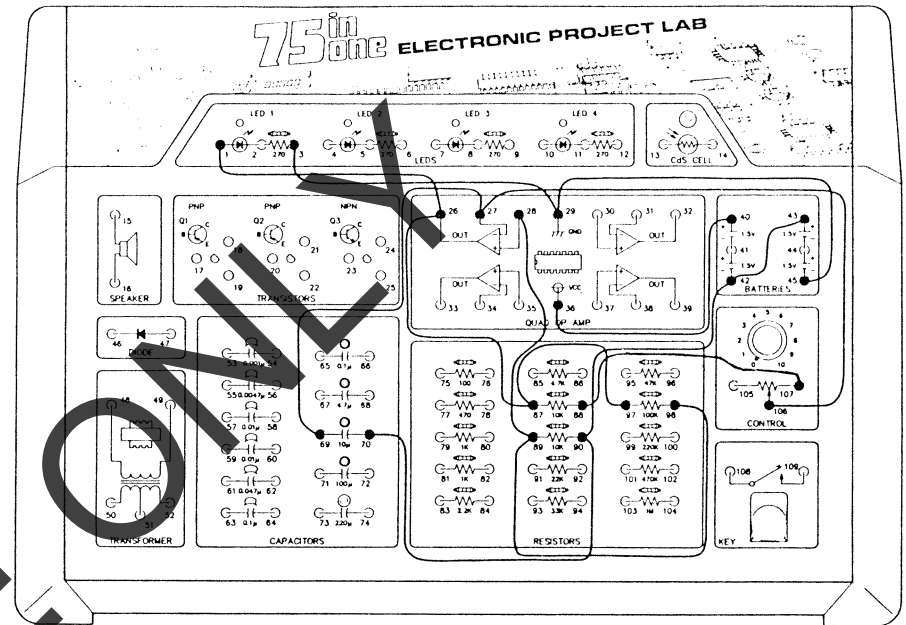
The circuit is an oscillator that uses the OP AMP. One capacitor and several resistors are connected around the OP AMP: the oscillating frequency is determined by the values of the capacitors and resistors. That is where the name, RC oscillating circuit, comes from. The RC stands for resistors and capacitors.

Connect the wires according to the wiring sequence. When you're finished, notice that LED1 flashes periodically. Turn the control to change LED1's flashing cycle.

LED1 illustrates the oscillator's oscillating status. The oscillator generates a signal that changes from negative to positive to negative... When the signal is positive, LED1 lights. When the signal is negative, LED1 goes out.

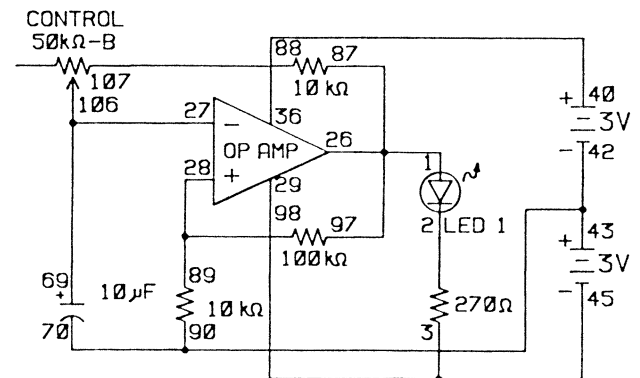
The number of times the positive/negative change occurs in a second is called the frequency. You can adjust the frequency by turning the control.

NOTES



Wiring Sequence:

1-26-87-97, 3-29-45, 28-89-98, 36-40, 69-27-106, 88-107, 70-90-42-43

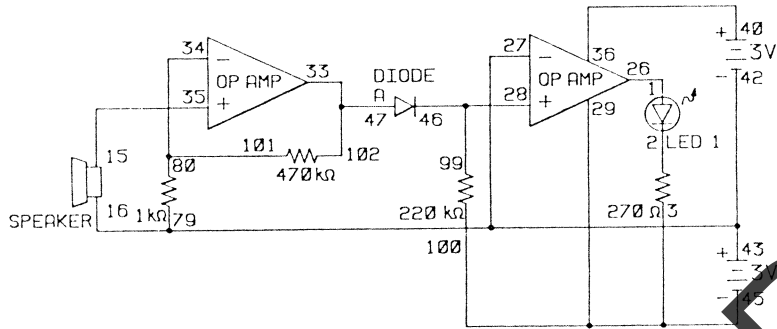


23. Sound Light

This project senses your voice, converts the sound to an electric signal, and lights LED1. For this circuit, the speaker behaves like a microphone.

Connect the wires as shown in the wiring sequence. When you're finished, speak into the speaker. When you speak, your voice signal converts into an electric signal. The signal is very weak, so the left OP AMP amplifies it almost five hundred times.

The signal is a AC signal and not suitable to light the LED. The diode rectifies (converts) the signal into a DC signal. The right OP AMP is the comparator. When the diode outputs the DC signal, LED1 lights.



Wiring Sequence:

1-26, 3-29-100-45, 15-35, 34-80-101, 36-40, 46-28-99, 47-33-102, 16-79-27-42-43

NOTES

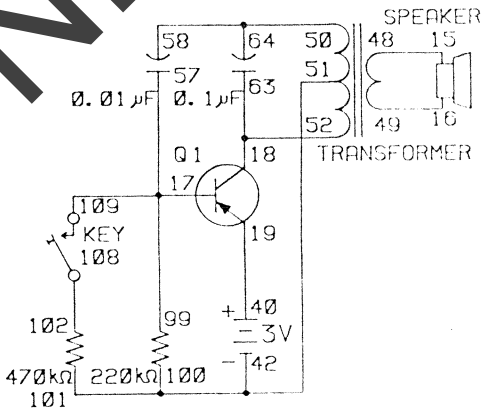


24. Two-Tone Patrol Car Siren

In this project, you build a two-tone patrol car siren using a low-frequency oscillator that consists of Q1, the transformer, and the 0.01 μF and 0.1 μF capacitors.

Connect the wires according to the wiring sequence. When you connect the last wires, you hear a beep from the speaker.

Press the key. The pitch becomes higher. Can you guess why? Pressing the key connects the 470k ohm resistor with the 220k ohm resistor in parallel, so the resistance value is reduced. As a result, the pitch increases.



Wiring Sequence:

15-48, 16-49, 17-57-99-109, 18-63-52, 50-64-58, 51-101-100-42, 101-19-40

NOTES

