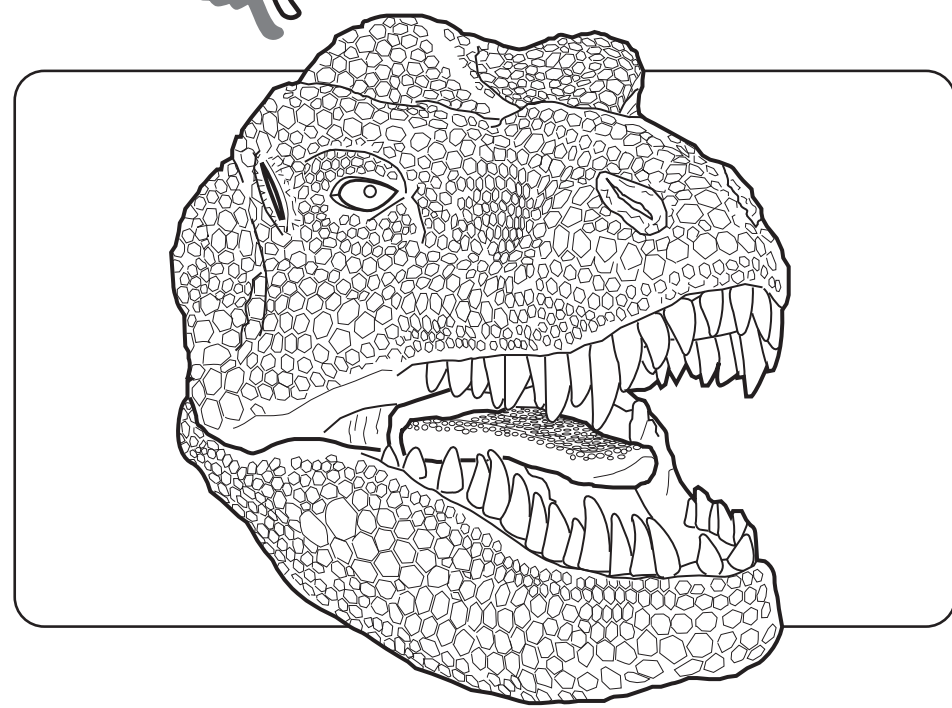


PegSculpture™

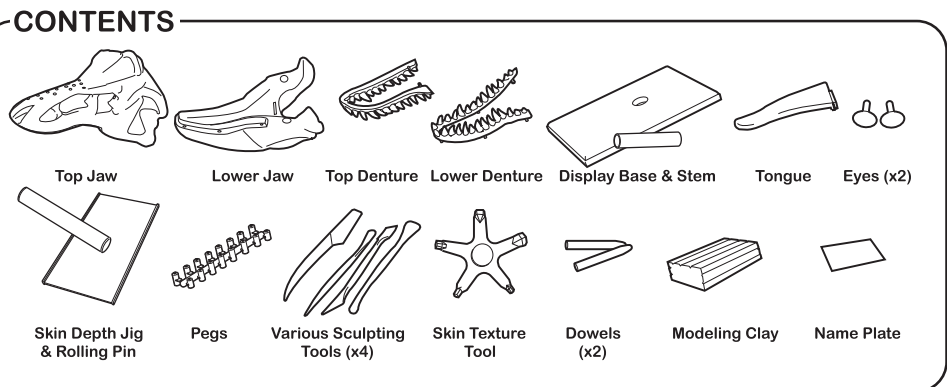
T-Rex

Item # 38014

English



Tyrannosaurus Rex is known worldwide and due to the discovery of many skeletons it is one of the most studied and displayed of all the dinosaurs. Several life size models have been rebuilt and even animated, as can be seen in The Natural History Museum in London. T Rex, as it is commonly known, means King Tyrant Lizard and lived between 80 to 65 million years ago in the late Cretaceous period when the climate was semi-tropical and the terrain forested. Whether T Rex was a predator or a scavenger is the subject of much debate, and opinions are drawn from biomechanical calculations based on leg muscle position and size, which gives its estimated speed at ten to twenty miles per hour. Some consider this just no fast enough for a predator, but others argue that its hollow bones allowed for faster movement and, as its eyes and ears were set to the front of its head rather than to the side, this gave it depth perception and directional hearing, required by hunters. This huge animal was 12 metres (40ft) long and 4.5 metres (15ft) high and weighed 6 tons. Its jaws were 1.2 metres (4ft) long, easily large enough to swallow a human whole. It could take 230 kgs (500 lbs) of meat and bones in one bite, the largest of its 54 teeth being 15 cm (6 inches) long. Its tiny forearms are still a mystery, but lend credence to the evolutionary concept of 'use it or lose it'. In other words these arms were being used less and less, and had the species survived long enough may well have disappeared altogether.



IMPORTANT NOTICE! **Not Suitable for Children Under 3 Years**

Find a large work surface in a well lit room.
Try to avoid working over carpeted flooring.
Cover your worktop and any carpeted flooring with Sheeting.
Debris from the modelling clay can cause staining to fabric surfaces.
Wear old clothing or an apron as it can get messy.
Ensure you pick up any debris so it doesn't get walked around your home.

Adult supervision required. Keep out of reach from children under 36 months.
Small debris may prove a choking hazard.
Clean hands with a dry cloth and wash in warm soapy water.

